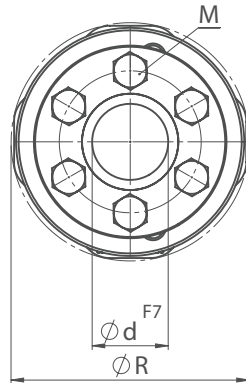
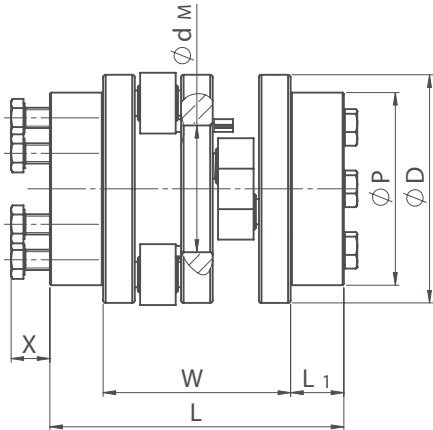
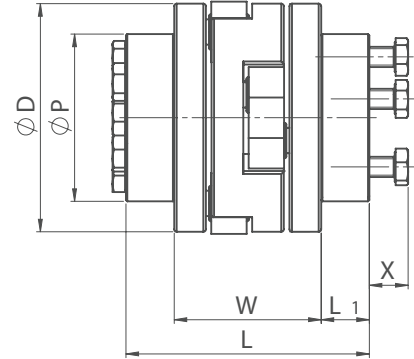


Hub version 3 - Locking-assembly

Standard F



Compact Plus C



Specifications

Size	D mm	R mm	L mm	L ₁ mm	X mm	W mm	P mm	d _M mm	Torque		Misalignment			m kg	J kg cm ²	n _{max} 1/min	C _T kNm/rad
									T _{KN} Nm	T _{Kmax} Nm	radial* mm	angular °	axial mm				
F 230	90	94	116	21	15	74	76	50	230	460	2	1	1	3,1	32,4	1.450	53
C 230			100			58								3,2	34,3	1.150	
F 265	100	104	116	19	15	74	66	55	265	530	2	1	1	3,2	37,1	1.350	61
C 265			100			58								3,4	41,2	1.100	
F 320	120	124	116	21	15	74	76	70	320	635	3	1	1	4,5	77,1	1.250	73
C 320			100			58								4,6	81,5	1.000	
F 440	100	100	116	19	15	101	66	40	440	920	3	1	1	5,6	79	1.150	105
F 575	120	120	151	25	17	101	96	60	575	1.220	3	1	1	6,8	126	1.050	140
C 575			128,5			78,5								7,2	134	850	
F 725	140	140	161	30	23	101	115	70	725	1.530	3	1	1	9,9	248	1.000	175
C 725			138,5			78,5								10,5	270	800	
F 830	160	160	161	30	23	101	115	90	830	1.755	4	1	1	11,6	360	950	201
C 830			138,5			78,5								12	381	750	
F 1120	140	143	188	30	17	134	115	55	1.120	2.730	3	0,8	1	12	295	850	313
F 1370	158	163	194	30	23	134	115	70	1.370	3.340	3	0,8	1	15,5	505	800	383
C 1370			170			110								16	530	650	

*Guide value at average rpm.

Mass of coupling size measured at max. bore diameter

R= Swing diameter at radial misalignment=0, M= Size of screw, T_{KN}= Nominal torque, T_{Kmax}= Maximum torque, C_T= Torsional stiffness, m= Mass, J= Moment of inertia, X= Mounting space, W= Coupling basis

Bore diameters

Size	d mm								
	25	28	30	32	35	40	42	45	50
F 230, C 230	■	■	■						
F 265, C 265	■	■	■						
F 320, C 320	■	■	■						
F 440	■	■	■						
F 575, C 575			■	■	■	■			
F 725, C 725							■	■	■
F 830, C 830							■	■	■
F 1120			■	■	■	■			
F 1370, C 1370							■	■	■

Combinations of different bore diameters are possible. Shown bore diameters are standard bores. Additional bore diameters as shown in the table are available on special request as well.

Ordering example:

F 265.33 Ø30 Ø30

Semiflex Standard, size 265, bore 30 mm, 30 mm

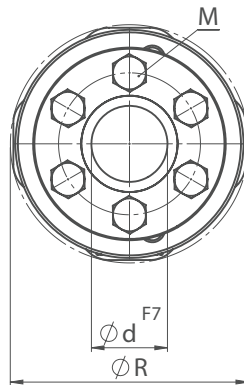
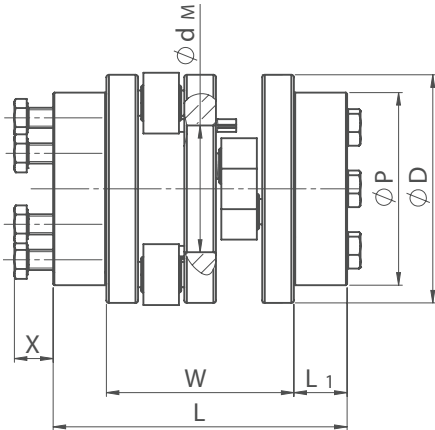
Ordering example:

C 265.33 Ø30 Ø30

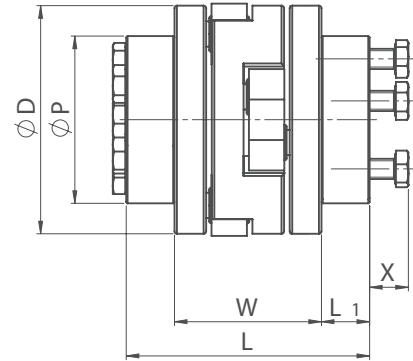
Semiflex Compact Plus, size 265, bore 30 mm, 30 mm

Hub version 3 - Locking-assembly

Standard F



Compact Plus C



Specifications

Size	D mm	R mm	L mm	L ₁ mm	X mm	W mm	P mm	d _M mm	Torque		Misalignment			m kg	J kg cm ²	n _{max} 1/min	C _T kNm/rad
									T _{KN} Nm	T _{Kmax} Nm	radial* mm	angular °	axial mm				
F 1580	180	183	202	34	24	134	120	90	1.580	3.845	4	0,8	1	19	795	750	441
C 1580			178			110								19,5	835	600	
F 2010	158	163	202	34	24	155	120	70	2.010	4.915	4	0,7	1	18	610	750	563
F 2390	180	183	225	35	30	155	155	90	2.390	5.855	4	0,7	1	25,5	1.110	700	671
C 2390			197			127								27	1.195	550	
F 2700	200	203	225	35	30	155	155	105	2.700	6.600	5	0,5	1	30	1.540	650	756
C 2700			197			127								30,5	1.600	500	
F 4220	200	200	266	35	30	196	155	100	4.220	11.300	5	0,3	2	33	1.725	600	1.295
F 5620	250	250	284	44	31	196	170	140	5.620	15.050	6	0,3	2	49	3.975	550	1.725
C 5620			240			152								51,5	4.250	450	
F 7040	300	300	296	50	30	196	185	190	7.040	18.840	6	0,3	2	66	7.700	500	2.159
C 7040			252			152								75,5	8.900	400	
F 7500	300	300	263	54	30	155	197	150	7.500	18.800	6	0,2	1	67	6.700	400	2.120
F 9750	350	350	271	58	30	155	215	150	9.750	24.100	6	0,2	1	89	11.900	400	2.760
F 14500	350	350	326	65	30	196	230	180	14.500	38.000	6	0,2	2	97	14.400	300	4.350

*Guide value at average rpm.

Mass of coupling size measured at max. bore diameter

R= Swing diameter at radial misalignment=0, M= Size of screw, T_{KN} = Nominal torque, T_{Kmax} = Maximum torque, C_T = Torsional stiffness, m= Mass, J= Moment of inertia, X= Mounting space, W= Coupling basis

T_{KN} = Nominal torque, T_{Kmax} = Maximum torque, C_T = Torsional stiffness,

Bore diameters

Size	d mm														
	50	55	60	65	70	75	80	85	90	95	100	105	110	115	120
F 1580, C 1580	■	■	■												
F 2010	■	■	■												
F 2390, C 2390			■	■	■										
F 2700, C 2700			■	■	■										
F 4220			■	■	■										
F 5620, C 5620					■	■	■								
F 7040, C 7040							■	■	■	■					
F 7500									■	■	■				
F 9750											■	■	■		
F 14500													■	■	■

Shown bore diameters are standard bores. Additional bore diameters as shown in the table are available on special request as well.

Ordering example:

F 2390.33 Ø60 Ø70

Semiflex Standard, size 2390, bore 60 mm, 70 mm

Ordering example:

C 2390.33 Ø60 Ø70

Semiflex Compact Plus, size 2390, bore 60 mm, 70 mm